

DATA MANAGEMENT IN PRACTICE

Applying CIDOC CRM in an Academic Research Data Management System

mariana.c.malta@inesctec.pt



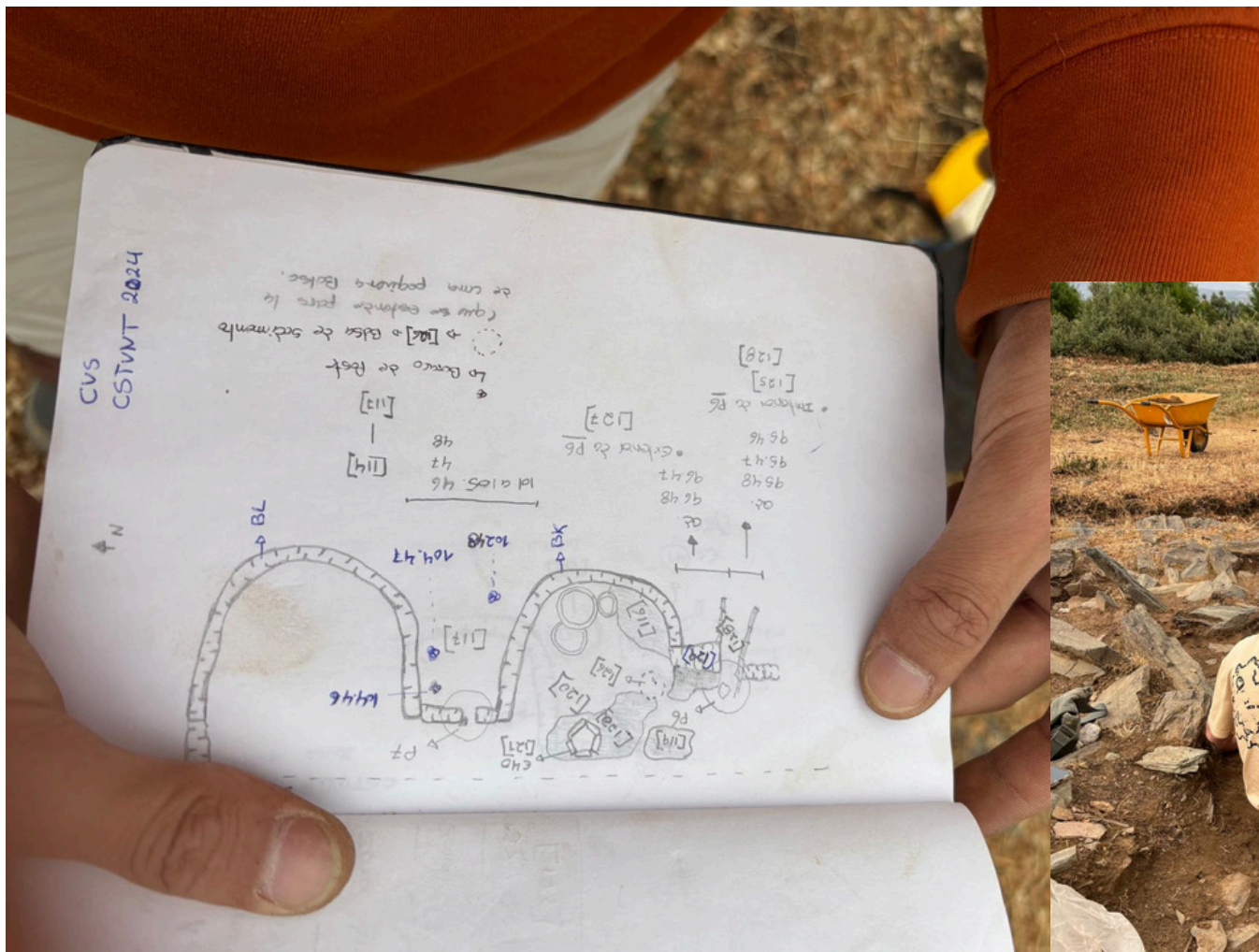
U. PORTO
FEUP FACULDADE DE ENGENHARIA
UNIVERSIDADE DO PORTO



 **INESCTEC**

Motivation

- Passion for past civilizations
 - Friendship
(with a colleague, an Archaeologist at the Univ. Nova de Lisboa)
 - Archaeological Excavation in Castanheiro do Vento
(Foz Côa, Portugal)
-



Where all this started



How to describe an arrowhead

Data | Metadata

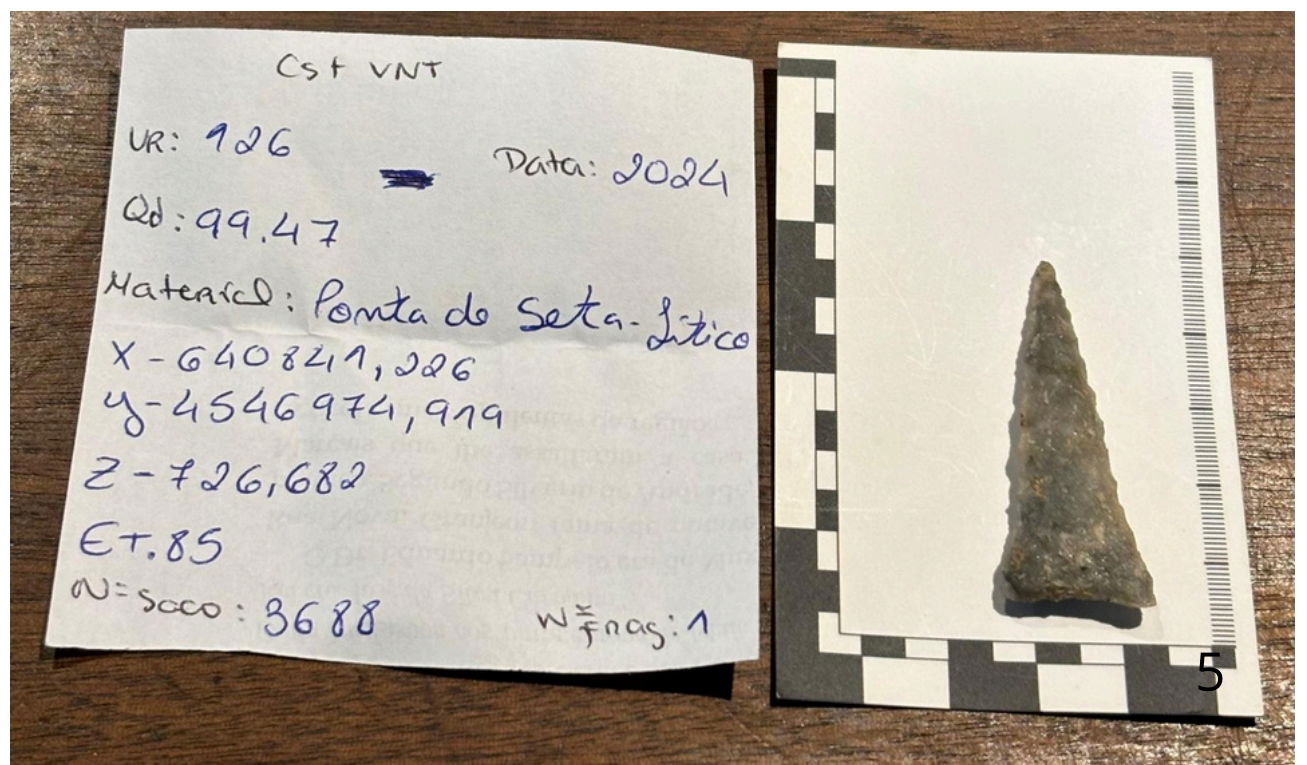
There are so many types of arrowheads
and all over the world!



How to describe an arrowhead

Data | Metadata

- There are so many different types of arrowheads
- All over the world!
- Dream about putting an intelligent system reasoning about these different arrowheads



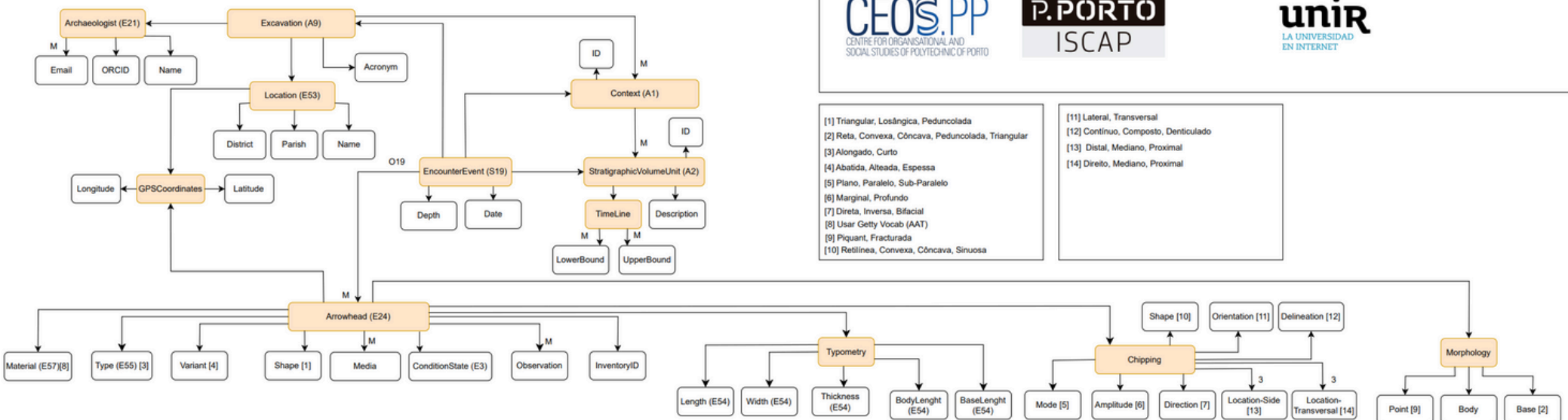
How to describe an arrowhead

Data | Metadata

- **There are so many arrowheads all over the world!**
- **Dream about putting an intelligent system reasoning about these different arrowheads**
- **And then there are other things important to know**
- **Like the context of the finding**

Domain Model

ARROWHEAD PROJECT | DOMAIN MODEL - V1.0



2024

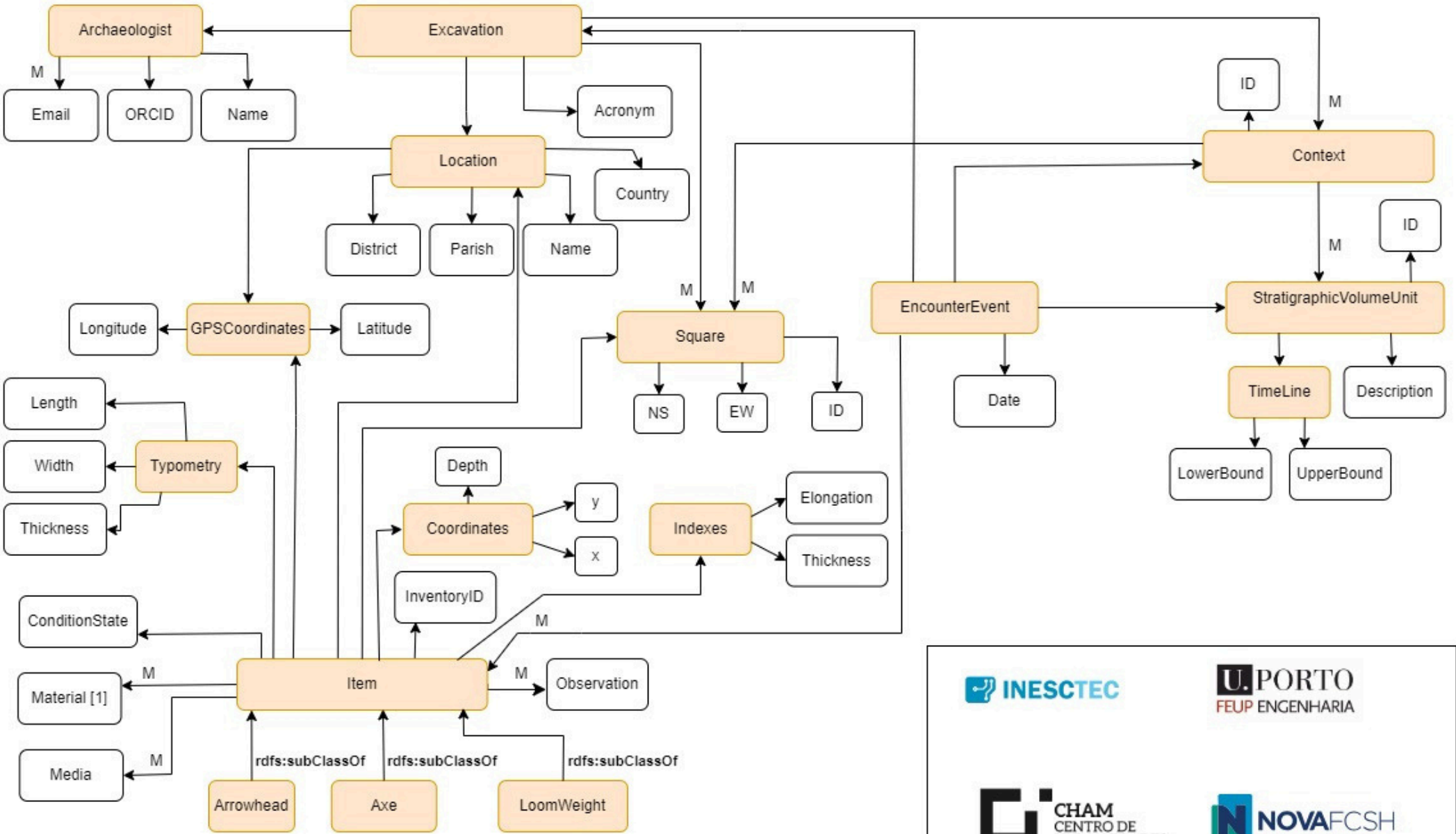
Curado-Malta, M., Diez-Platas, M.L., Araújo, A., Muralha, J., Oliveira, M. (2024). Promoting Interoperability on the Datasets of the Arrowheads Findings of the Chalcolithic and the Early/Middle Bronze Age. In: Antonacopoulos, A., et al. Linking Theory and Practice of Digital Libraries. TPD L 2024. Lecture Notes in Computer Science, vol 15177. Springer, Cham. https://doi.org/10.1007/978-3-031-72437-4_6

But then ...

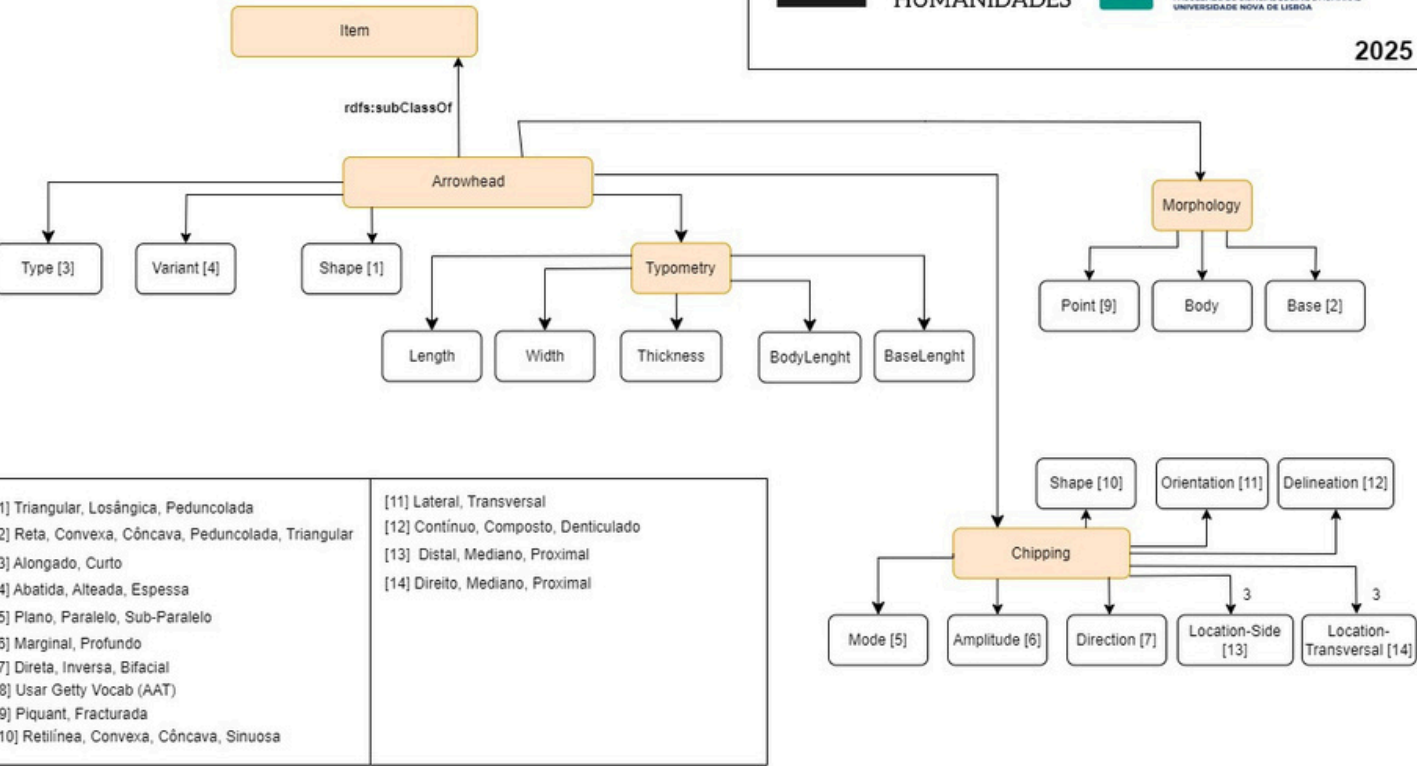


But then ...

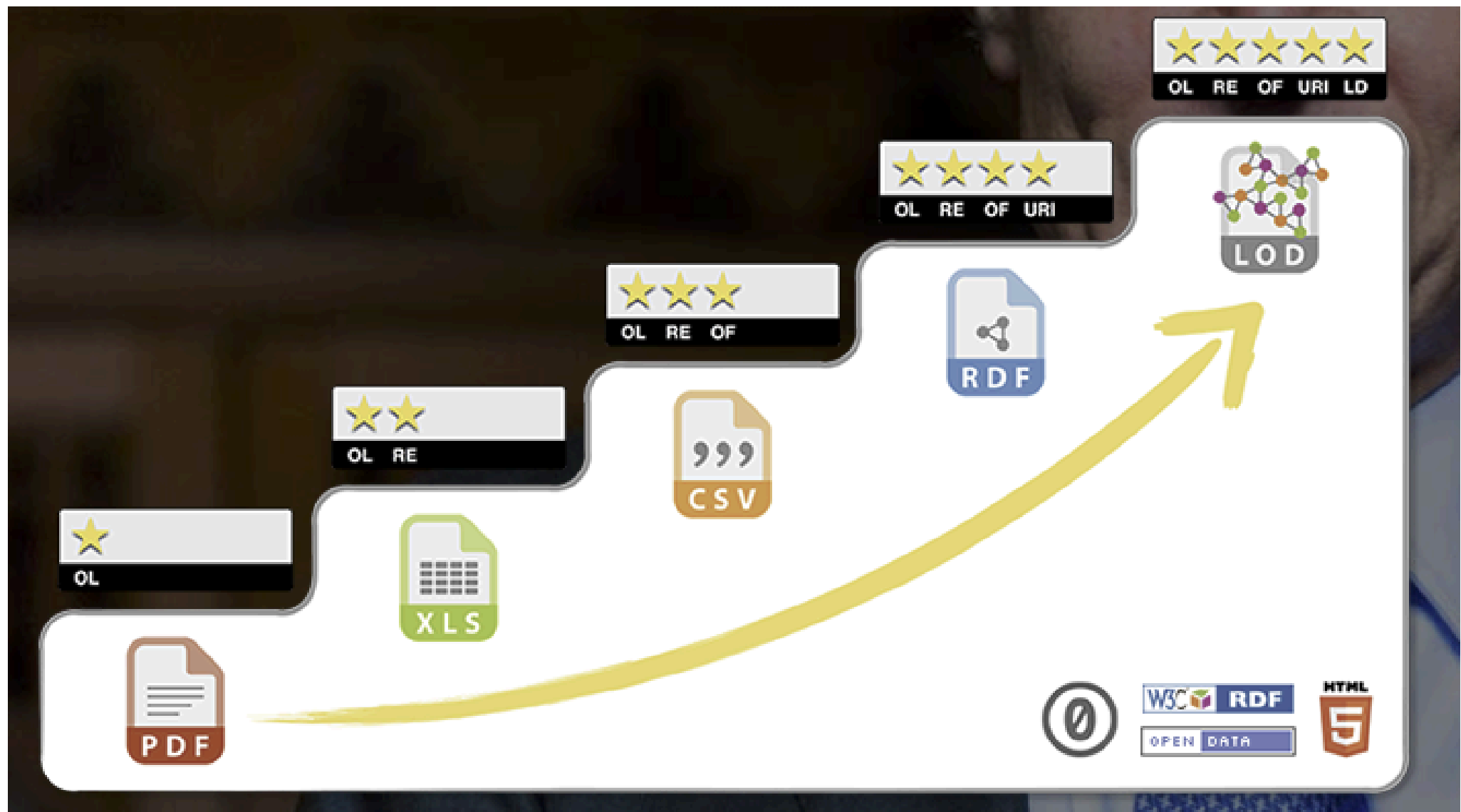




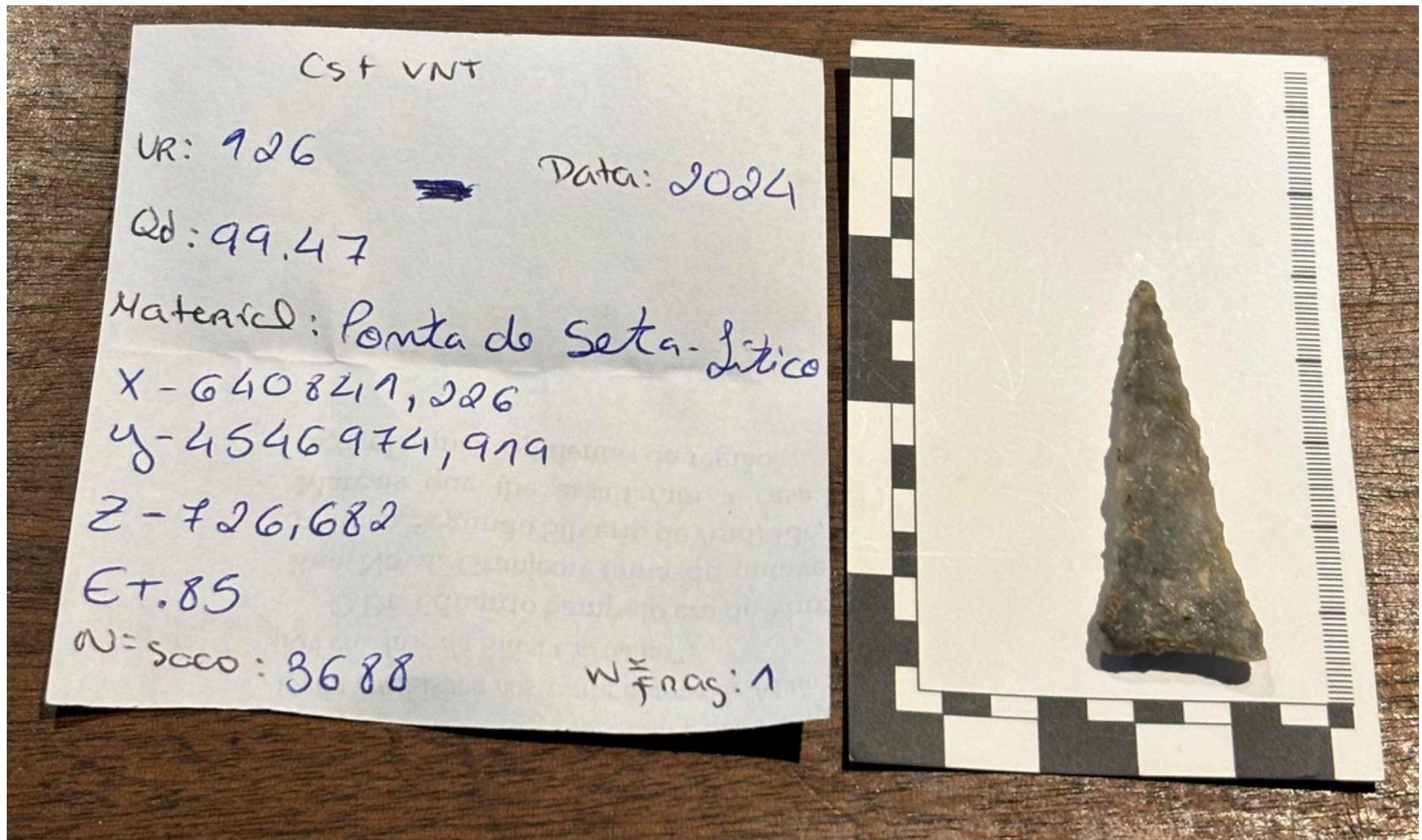
[1] A good practice is to use the Getty Vocab (AAT) if possible



Paradigm: Linked Open Data (5* data)



Metadata Application Profile



The domain model (and the semantic model) comes from the data

It is a different process from the one we are used to (as software developers - Functional and non-functional req)

In fact, here we have informational requirements....

Metadata Application Profile

- Identify the terms (in the RDF vocabs) that can express what we need
- Identify the constraints

→ HAVING AS DRIVE SEMANTIC INTEROPERABILITY

- CIDOC CRM + extensions → why?

STANDARD

Vocabularies used

NameSpaces

Prefix	URI
dct	http://purl.org/dc/terms/
dul	http://www.ontologydesignpatterns.org/ont/dul/DUL.owl
foaf	http://xmlns.com/foaf/0.1/
dbo	http://dbpedia.org/ontology/
crm	http://www.cidoc-crm.org/cidoc-crm/
crmsci	https://cidoc-crm.org/extensions/crmsci/
crmarchaeo	http://www.cidoc-crm.org/extensions/crmarchaeo/
edm	http://www.europeana.eu/schemas/edm
geo	http://www.w3.org/2003/01/geo/wgs84_pos#
time	http://www.w3.org/2006/time#
ah	https://purl.org/megalod/ms/ah/
excav	https://purl.org/megalod/ms/excavation/
axe	https://purl.org/megalod/ms/axe/
lw	https://purl.org/megalod/ms/loomWeight/

MegaLOD MAP & CIDOC CRM + extensions

In the RDF vocabulary (owl:equivalentClass, Domain & Range)

<https://purl.org/megalod/ms/excavation/>

excav:Archaeologist owl:equivalentClass crm:E21_Person

excav:Archaeologist
rdfs:domain crmarchaeo: A9_Archaeological_Excavation
rdfs:range excav:Archaeologist

excav:hasSVU
rdfs:domain crmarchaeo:A1_Excavation_Processing_Unit
rdfs:range crmarchaeo:A2_Stratigraphic_Volume_Unit

excav:hasTimeline
rdfs:domain crmarchaeo:A2_Stratigraphic_Volume_Unit

excav:foundInSVU
rdfs:domain crmsci:S19_Encounter_Event
rdfs:range crmarchaeo:A2_Stratigraphic_Volume_Unit

```
##### #-----<-----<br>##### #-----<-----<br>##### #-----<-----<br>#####<br><br>excav:Archaeologist<br>  a rdfs:Class;<br>  rdfs:comment "This Class represents the role of an archaeologist in an excavation";<br>  rdfs:isDefinedBy <https://purl.org/megalod/ms/excavation/>;<br>  rdfs:label "Location - has GPS coordinates";<br>  owl:equivalentClass crm:E21_Person;<br>  rdfs:SubClassOf foaf:Person;<br>  vann:usageNote "Non-mandatory";<br><br>##### #-----<-----<br>##### #-----<-----<br>##### #-----<-----<br>#####<br><br>#>-----<br>#> Data Properties<br>#>-----<br>excav:bc<br>  a rdf:Property, owl:DataProperty;<br>  rdfs:comment "This property is used to record the location of an excavation unit";<br>  rdfs:comment "Esta propriedade é utilizada para registrar a localização de uma unidade de escavação";<br>  rdfs:isDefinedBy <https://purl.org/megalod/ms/excavation/>;<br>  rdfs:label "Definition of the location of an excavation unit";<br>  rdfs:label "Definição do local de uma unidade de escavação";<br>  rdfs:domain time:Instant;<br>  rdfs:range xsd:boolean;<br>  vann:usageNote "Non-mandatory";<br>#>-----
```

MegaLOD MAP & CIDOC CRM + extensions

In the RDF vocabulary (owl:equivalentClass, Domain & Range)

<https://purl.org/megalod/ms/excavation/>

excav:foundInAContext

rdfs:domain crmsci:S19_Encounter_Event
rdfs:range crmarchaeo:A1_Excavation_Processing_Unit

excav:foundInAExcavation
rdfs:domain crmsci:S19_Encounter_Event
rdfs:range crmarchaeo:A9_Archaeological_Excavation

```
#-----<----->-----#
#-----<-----> CLASSES <----->-----#
#-----<----->-----#
#-----<----->-----#
```

```
excav:Archaeologist
  a rdfs:Class;
  rdfs:comment "This Class represents the Archaeologist in charge of the excavation."@en;
  rdfs:isDefinedBy <https://purl.org/ah/ms/excavationMS>;
  rdfs:label "Location - has GPS Coordinates"@en;
  owl:equivalentClass crm:E21_Person;
  rdfs:SubClassOf foaf:Person;
  vann:usageNote "Non-mandatory Property - 0..1"@en .
```

```
#-----<----->-----#
#-----<----->-----#
#-----<-----> Properties <----->-----#
#-----<----->-----#
#-----<----->-----#
```

```
#>-----<----->-----#
#> Data Properties <----->-----#
#>-----<----->-----#
excav:bc
```

```
  a rdf:Property, owl:DataProperty;
  rdfs:comment "This property informs if the date in the bound of the timeline is before christ (true) or After christ (false)"@en;
```


MegaLOD MAP and CIDOC CRM + sci

In the Metadata Application Profile

<https://purl.org/megalod/map>

crmsci:O19_encountered_object

crm:E3_Condition_State

crm:E57_Material

crm:E55_Type

crm:E54_Dimension

GraphDB

Import

Explore

Graphs overview

Class hierarchy

Class relationships

Visual graph

SPARQL

Setup

Lab

Help

SPARQL Query & Update

1 PREFIX crm: <http://www.cidoc-crm.org/cidoc-crm#>
2 PREFIX crmsci: <https://purl.org/ontology/crm/sci#>
3 PREFIX crmshas: <http://www.cidoc-crm.org/extensions/crmshas#>
4
5 SELECT DISTINCT ?subject
6 GRAPH crmsci:O19_encountered_object
7 ?subject ?predicate
8 WHERE {
9-1 GRAPH ?predicate E
10 ?subject ?predicate ?object .
11 FILTER {
12 STRSTARTS(?predicate, "http://www.cidoc-crm.org/cidoc-crm/") ||
13 crmshas:hasMaterial(?subject, ?object)
14 }
15 }

Table | Raw responses | Plot Table | Graph Chart

Showing results from 0 to 53 of 53. Query took 0.7s, moments ago.

	subject	property	object	context
1	http://localhost/megalod/9937/encountered/CST/VNT/encountered/encounter-3983	crm:E57_Material	http://localhost/megalod/9937/Item/ah-001	https://purl.org/megalod/9937/
2	http://localhost/megalod/9937/encountered/CST/VNT/encountered/encounter-3983	crm:E57_Material	http://localhost/megalod/9937/Item/ah-002	https://purl.org/megalod/9937/
3	http://localhost/megalod/9937/encountered/CST/VNT/encountered/encounter-3988	crm:E57_Material	http://localhost/megalod/9937/Item/ah-003	https://purl.org/megalod/9937/
4	http://localhost/megalod/9937/encountered/CST/VNT/encountered/encounter-3988	crm:E57_Material	http://localhost/megalod/9937/Item/ah-005	https://purl.org/megalod/9937/
5	http://localhost/megalod/9937/encountered/CST/VNT/encountered/encounter-3990	crm:E57_Material	http://localhost/megalod/9937/Item/ah-006	https://purl.org/megalod/9937/
6	http://localhost/megalod/9937/encountered/CST/VNT/encountered/encounter-3990	crm:E57_Material	http://localhost/megalod/9937/Item/ah-010	https://purl.org/megalod/9937/
7	http://localhost/megalod/9937/encountered/CST/VNT/encountered/encounter-3994	crm:E57_Material	http://localhost/megalod/9937/Item/ah-014	https://purl.org/megalod/9937/
8	http://localhost/megalod/9937/encountered/CST/VNT/encountered/encounter-3996	crm:E57_Material	http://localhost/megalod/9937/Item/ah-015	https://purl.org/megalod/9937/
9	http://localhost/megalod/9937/encountered/CST/VNT/encountered/encounter-3998	crm:E57_Material	http://localhost/megalod/9937/Item/ah-017	https://purl.org/megalod/9937/
10	http://localhost/megalod/9937/encountered/CST/VNT/encountered/encounter-4000	crm:E57_Material	http://localhost/megalod/9937/Item/ah-018	https://purl.org/megalod/9937/
11	http://localhost/megalod/9937/encountered/CST/VNT/encountered/encounter-4002	crm:E57_Material	http://localhost/megalod/9937/Item/ah-020	https://purl.org/megalod/9937/
12	http://localhost/megalod/9937/encountered/CST/VNT/encountered/encounter-4004	crm:E57_Material	http://localhost/megalod/9937/Item/ah-023	https://purl.org/megalod/9937/
13	http://localhost/megalod/9937/encountered/CST/VNT/encountered/encounter-4006	crm:E57_Material	http://localhost/megalod/9937/Item/ah-022	https://purl.org/megalod/9937/
14	http://localhost/megalod/9937/encountered/CST/VNT/encountered/encounter-4008	crm:E57_Material	http://localhost/megalod/9937/Item/ah-029	https://purl.org/megalod/9937/
15	http://localhost/megalod/9937/encountered/CST/VNT/encountered/encounter-4011	crm:E57_Material	http://localhost/megalod/9937/Item/ah-038	https://purl.org/megalod/9937/
16	http://localhost/megalod/9937/encountered/CST/VNT/encountered/encounter-4029	crm:E57_Material	http://localhost/megalod/9937/Item/ah-40	https://purl.org/megalod/9937/
17	http://localhost/megalod/9937/encountered/CST/VNT/encountered/encounter-4038	crm:E57_Material	http://localhost/megalod/9937/Item/ah-34F	https://purl.org/megalod/9937/
18	http://localhost/megalod/9937/Item/ah-001	crm:E55_Type	http://ncaa.getty.edu/page/ka/300011443	https://purl.org/megalod/9937/
19	http://localhost/megalod/9937/Item/ah-002	crm:E55_Type	http://ncaa.getty.edu/page/ka/300011443	https://purl.org/megalod/9937/
20	http://localhost/megalod/9937/Item/ah-003	crm:E55_Type	http://ncaa.getty.edu/page/ka/300011175	https://purl.org/megalod/9937/
21	http://localhost/megalod/9937/Item/ah-005	crm:E55_Type	http://ncaa.getty.edu/page/ka/300011175	https://purl.org/megalod/9937/
22	http://localhost/megalod/9937/Item/ah-006	crm:E55_Type	http://ncaa.getty.edu/page/ka/300011175	https://purl.org/megalod/9937/
23	http://localhost/megalod/9937/Item/ah-010	crm:E55_Type	http://ncaa.getty.edu/page/ka/300011175	https://purl.org/megalod/9937/
24	http://localhost/megalod/9937/Item/ah-014	crm:E55_Type	http://ncaa.getty.edu/page/ka/300011175	https://purl.org/megalod/9937/
25	http://localhost/megalod/9937/Item/ah-015	crm:E55_Type	http://ncaa.getty.edu/page/ka/300011175	https://purl.org/megalod/9937/
26	http://localhost/megalod/9937/Item/ah-017	crm:E55_Type	http://ncaa.getty.edu/page/ka/300011175	https://purl.org/megalod/9937/
27	http://localhost/megalod/9937/Item/ah-018	crm:E55_Type	http://ncaa.getty.edu/page/ka/300011175	https://purl.org/megalod/9937/
28	http://localhost/megalod/9937/Item/ah-020	crm:E55_Type	http://ncaa.getty.edu/page/ka/300011175	https://purl.org/megalod/9937/
29	http://localhost/megalod/9937/Item/ah-022	crm:E55_Type	http://ncaa.getty.edu/page/ka/300011175	https://purl.org/megalod/9937/
30	http://localhost/megalod/9937/Item/ah-023	crm:E55_Type	http://ncaa.getty.edu/page/ka/300011175	https://purl.org/megalod/9937/
31	http://localhost/megalod/9937/Item/ah-029	crm:E55_Type	http://ncaa.getty.edu/page/ka/300011175	https://purl.org/megalod/9937/
32	http://localhost/megalod/9937/Item/ah-40	crm:E55_Type	http://ncaa.getty.edu/page/ka/300011175	https://purl.org/megalod/9937/
33	http://localhost/megalod/9937/Item/ah-34F	crm:E55_Type	http://ncaa.getty.edu/page/ka/300011175	https://purl.org/megalod/9937/
34	http://localhost/megalod/4032/encountered/encounter-4032/ah	crm:E54_Dimension	http://localhost/megalod/4032/Item/2718222	https://purl.org/megalod/4032/
35	http://localhost/megalod/4042/encountered/encounter-4042	crm:E54_Dimension	http://localhost/megalod/4042/Item/ah-1	https://purl.org/megalod/4042/
36	http://localhost/megalod/4042/encountered/encounter-4042	crm:E54_Dimension	http://localhost/megalod/4042/Item/ah-1	https://purl.org/megalod/4042/
37	http://localhost/megalod/4042/encountered/encounter-4042	crm:E54_Dimension	http://localhost/megalod/4042/Item/ah-22	https://purl.org/megalod/4042/
38	http://localhost/megalod/4042/Item/ah-22	crm:E54_Dimension	https://purl.org/megalod/4042/	https://purl.org/megalod/4042/
39	http://localhost/megalod/4042/Item/ah-22	crm:E54_Dimension	https://purl.org/megalod/4042/	https://purl.org/megalod/4042/
40	http://localhost/megalod/4042/Item/ah-22	crm:E54_Dimension	https://purl.org/megalod/4042/	https://purl.org/megalod/4042/
41	http://localhost/megalod/4042/encountered/encounter-4077	crm:E54_Dimension	https://purl.org/megalod/4042/	https://purl.org/megalod/4042/
42	http://localhost/megalod/4042/encountered/encounter-4079	crm:E54_Dimension	https://purl.org/megalod/4042/	https://purl.org/megalod/4042/
43	http://localhost/megalod/4042/encountered/encounter-4081	crm:E54_Dimension	https://purl.org/megalod/4042/	https://purl.org/megalod/4042/
44	http://localhost/megalod/4042/Item/ah-002	crm:E54_Dimension	https://purl.org/megalod/4042/	https://purl.org/megalod/4042/
45	http://localhost/megalod/4042/Item/ah-002	crm:E54_Dimension	https://purl.org/megalod/4042/	https://purl.org/megalod/4042/
46	http://localhost/megalod/4042/Item/ah-002	crm:E54_Dimension	https://purl.org/megalod/4042/	https://purl.org/megalod/4042/
47	http://localhost/megalod/4042/Item/ah-002	crm:E54_Dimension	https://purl.org/megalod/4042/	https://purl.org/megalod/4042/
48	http://localhost/megalod/4042/Item/ah-002	crm:E54_Dimension	https://purl.org/megalod/4042/	https://purl.org/megalod/4042/
49	http://localhost/megalod/4042/Item/ah-002	crm:E54_Dimension	https://purl.org/megalod/4042/	https://purl.org/megalod/4042/
50	http://localhost/megalod/4042/encountered/encounter-4101	crm:E54_Dimension	https://purl.org/megalod/4042/	https://purl.org/megalod/4042/
51	http://localhost/megalod/4042/Item/ah-002	crm:E54_Dimension	https://purl.org/megalod/4042/	https://purl.org/megalod/4042/
52	http://localhost/megalod/4042/Item/ah-002	crm:E54_Dimension	https://purl.org/megalod/4042/	https://purl.org/megalod/4042/

53

We may use cookies to help us improve GraphDB and develop better features. No personal or sensitive information is collected. By clicking "OK" you consent to our [Cookie Policy](#) [OK](#)

18

Some Triples

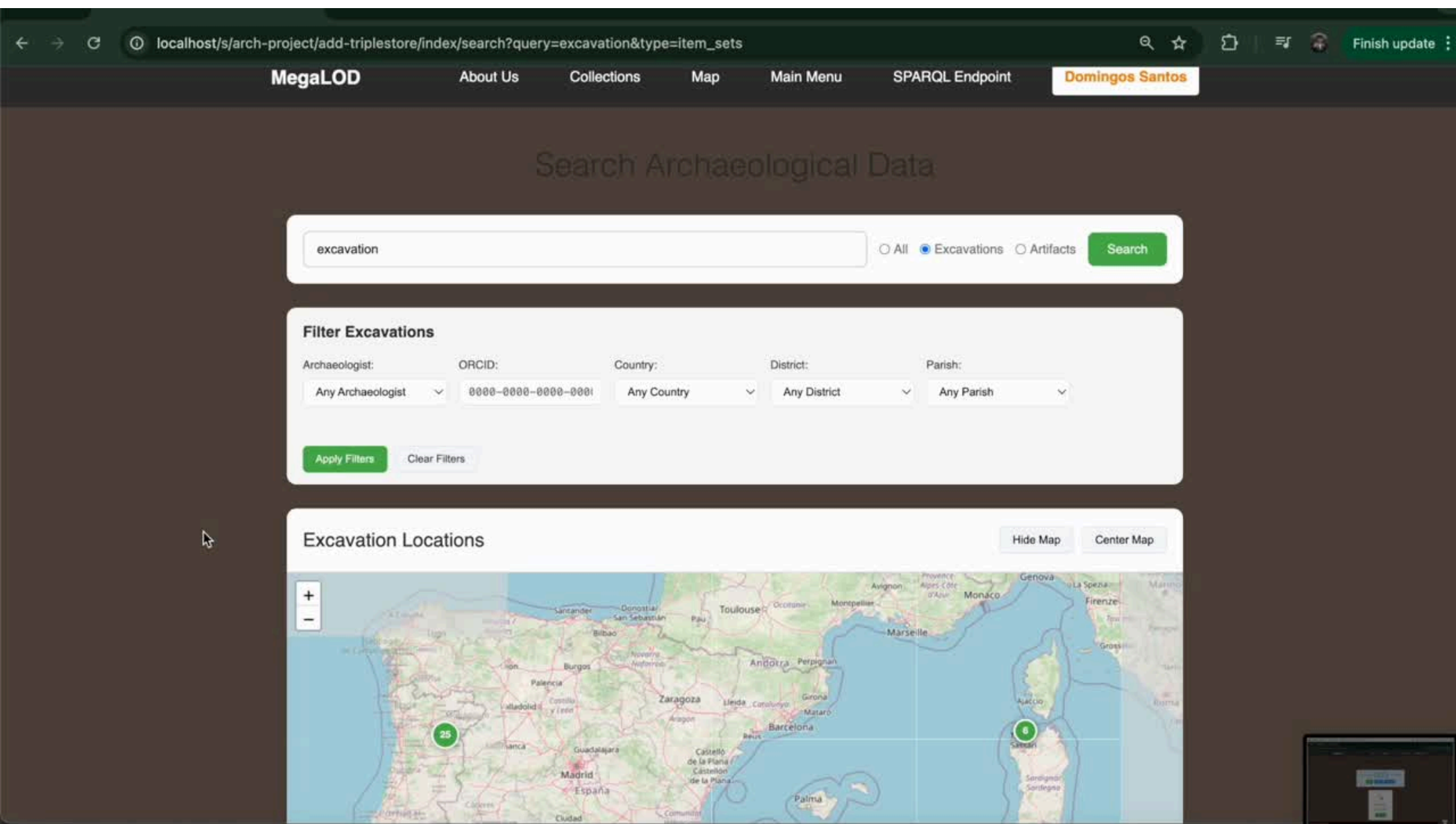
	subject	property	object
1	http://localhost/megalod/3937/excavation/CSTVNT/encounter/encounter-3983	"O19_encountered_object"	http://localhost/megalod/3937/item/ah-001
2	http://localhost/megalod/3937/excavation/CSTVNT/encounter/encounter-3983	"O19_encountered_object"	http://localhost/megalod/3937/item/ah-002
3	http://localhost/megalod/3937/excavation/CSTVNT/encounter/encounter-3986	"O19_encountered_object"	http://localhost/megalod/3937/item/ah-003
4	http://localhost/megalod/3937/excavation/CSTVNT/encounter/encounter-3988	"O19_encountered_object"	http://localhost/megalod/3937/item/ah-005
5	http://localhost/megalod/3937/excavation/CSTVNT/encounter/encounter-3990	"O19_encountered_object"	http://localhost/megalod/3937/item/ah-006
6	http://localhost/megalod/3937/excavation/CSTVNT/encounter/encounter-3992	"O19_encountered_object"	http://localhost/megalod/3937/item/ah-010
7	http://localhost/megalod/3937/excavation/CSTVNT/encounter/encounter-3994	"O19_encountered_object"	http://localhost/megalod/3937/item/ah-014
8	http://localhost/megalod/3937/excavation/CSTVNT/encounter/encounter-3996	"O19_encountered_object"	http://localhost/megalod/3937/item/ah-015
9	http://localhost/megalod/3937/excavation/CSTVNT/encounter/encounter-3998	"O19_encountered_object"	http://localhost/megalod/3937/item/ah-017
10	http://localhost/megalod/3937/excavation/CSTVNT/encounter/encounter-4000	"O19_encountered_object"	http://localhost/megalod/3937/item/ah-018
11	http://localhost/megalod/3937/excavation/CSTVNT/encounter/encounter-4002	"O19_encountered_object"	http://localhost/megalod/3937/item/ah-020
12	http://localhost/megalod/3937/excavation/CSTVNT/encounter/encounter-4004	"O19_encountered_object"	http://localhost/megalod/3937/item/ah-023
13	http://localhost/megalod/3937/excavation/CSTVNT/encounter/encounter-4006	"O19_encountered_object"	http://localhost/megalod/3937/item/ah-022
14	http://localhost/megalod/3937/excavation/CSTVNT/encounter/encounter-4009	"O19_encountered_object"	http://localhost/megalod/3937/item/ah-029
15	http://localhost/megalod/3937/excavation/CSTVNT/encounter/encounter-4011	"O19_encountered_object"	http://localhost/megalod/3937/item/ah-038
16	http://localhost/megalod/3937/excavation/CSTVNT/encounter/encounter-4029	"O19_encountered_object"	http://localhost/megalod/3937/item/ah-40
17	http://localhost/megalod/3937/excavation/CSTVNT/encounter/encounter-4038	"O19_encountered_object"	http://localhost/megalod/3937/item/AH-34f

4038		
18	http://localhost/megalod/3937/item/ah-001	"E57_Material"
19	http://localhost/megalod/3937/item/ah-002	"E57_Material"
20	http://localhost/megalod/3937/item/ah-003	"E57_Material"
21	http://localhost/megalod/3937/item/ah-005	"E57_Material"
22	http://localhost/megalod/3937/item/ah-006	"E57_Material"
23	http://localhost/megalod/3937/item/ah-010	"E57_Material"
24	http://localhost/megalod/3937/item/ah-014	"E57_Material"
25	http://localhost/megalod/3937/item/ah-015	"E57_Material"
26	http://localhost/megalod/3937/item/ah-017	"E57_Material"
27	http://localhost/megalod/3937/item/ah-018	"E57_Material"
28	http://localhost/megalod/3937/item/ah-020	"E57_Material"
29	http://localhost/megalod/3937/item/ah-022	"E57_Material"
30	http://localhost/megalod/3937/item/ah-023	"E57_Material"
31	http://localhost/megalod/3937/item/ah-029	"E57_Material"
32	http://localhost/megalod/3937/item/ah-038	"E57_Material"
33	http://localhost/megalod/3937/item/ah-40	"E3_Condition_State"
34	http://localhost/megalod/4032/excavation/auxd/encounter/encounter-4036	"O19_encountered_object"
35	http://localhost/megalod/4040/excavation/esxcav-11/encounter/encounter-4045	"O19_encountered_object"
36	http://localhost/megalod/4047/excavation/Excav-teste/encounter/encounter-4052	"O19_encountered_object"
37	http://localhost/megalod/4061/excavation/Excavation-example/encounter/encounter-4066	"O19_encountered_object"
38	http://localhost/megalod/4061/item/AH-22	"E3_Condition_State"
39	http://localhost/megalod/4061/item/AH-22	"E55_Type"
40	http://localhost/megalod/4061/item/AH-22	"E57_Material"
41	http://localhost/megalod/4069/excavation/EXC-PRESENTATION/encounter/encounter-4077	"O19_encountered_object"
42	http://localhost/megalod/4069/excavation/EXC-PRESENTATION/encounter/encounter-4079	"O19_encountered_object"
43	http://localhost/megalod/4069/excavation/EXC-PRESENTATION/encounter/encounter-4081	"O19_encountered_object"
44	http://localhost/megalod/4069/item/AH-002	"E3_Condition_State"
45	http://localhost/megalod/4069/item/AH-002	"E55_Type"
46	http://localhost/megalod/4069/item/AH-002	"E57_Material"
47	http://localhost/megalod/4069/item/AH-teste-2	"E3_Condition_State"
48	http://localhost/megalod/4069/item/AH-teste-2	"E55_Type"
49	http://localhost/megalod/4069/item/AH-teste-2	"E57_Material"
50	http://localhost/megalod/4095/excavation/EXC-PRESENTATION-2/encounter/encounter-4101	"O19_encountered_object"
51	http://localhost/megalod/4095/item/AH-002	"E3_Condition_State"
52	http://localhost/megalod/4095/item/AH-002	"E55_Type"

System developed by a Master Student

FrontOffice

Domingos Santos

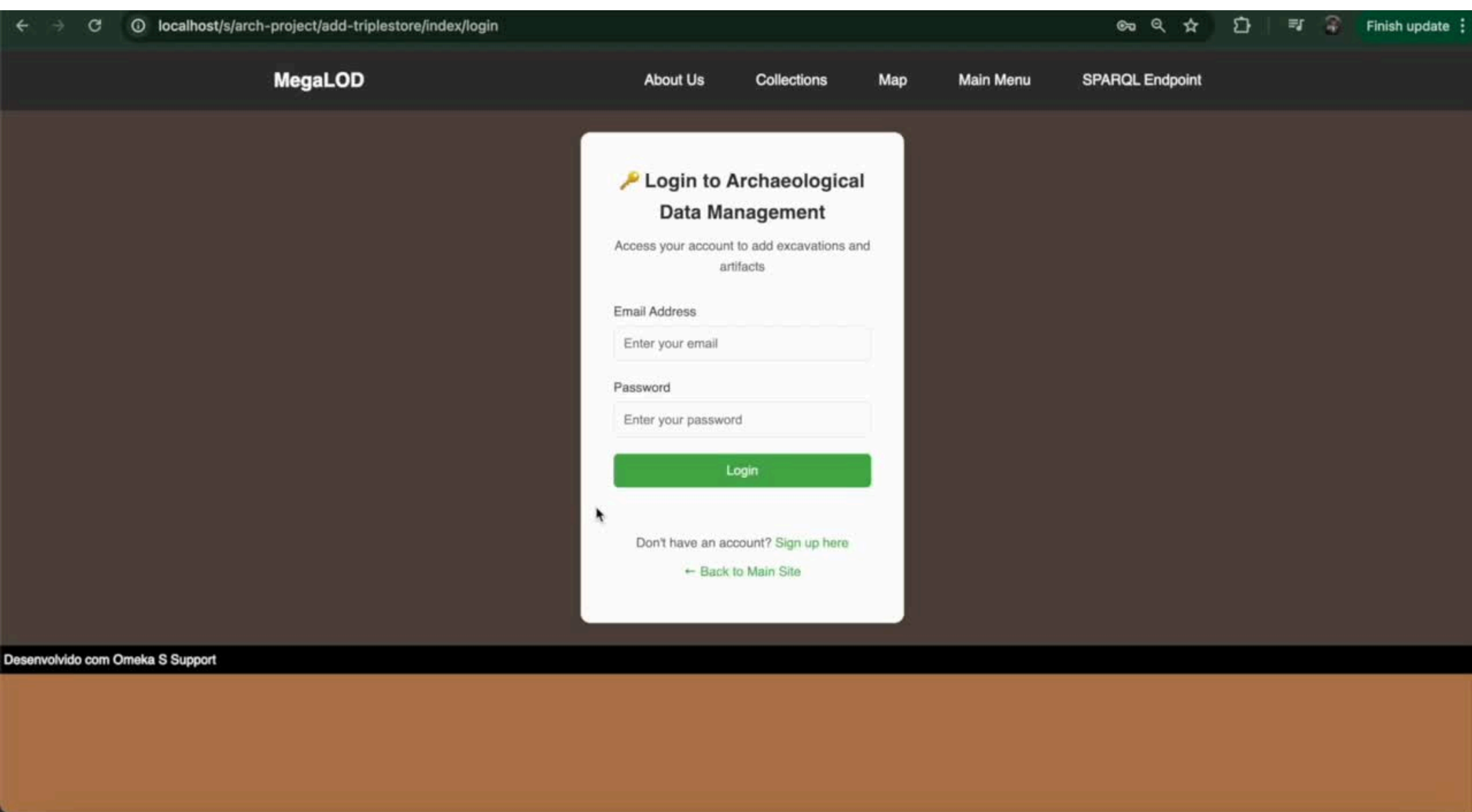


Using Omeka S

Upload data, manage data, sincronise it with RDF-store

System developed by a Master Student

BackOffice




The screenshot shows a web browser window with the address bar displaying `localhost/s/arch-project/add-triplestore/index/login`. The page features a dark header with the logo "MegaLOD" and navigation links: "About Us", "Collections", "Map", "Main Menu", and "SPARQL Endpoint". A green "Finish update" button is in the top right corner. The main content area has a dark background and a central white login box. The login box is titled "Login to Archaeological Data Management" with a key icon. Below the title is a subtitle: "Access your account to add excavations and artifacts". The form includes two input fields: "Email Address" with the placeholder "Enter your email" and "Password" with the placeholder "Enter your password". A green "Login" button is positioned below the password field. At the bottom of the login box, there is a link "Don't have an account? Sign up here" and a link "← Back to Main Site". The footer of the page contains the text "Desenvolvido com Omeka S Support".

localhost/s/arch-project/add-triplestore/index/login

Finish update

MegaLOD

About Us Collections Map Main Menu SPARQL Endpoint

 Login to Archaeological Data Management

Access your account to add excavations and artifacts

Email Address

Enter your email

Password

Enter your password

Login

Don't have an account? [Sign up here](#)

[← Back to Main Site](#)

Desenvolvido com Omeka S Support

System developed by a Master Student

SPARQL EndPoint with GraphDB

GraphDB

Import

Explore

SPARQL

Setup

Lab

Help

```
3
4 SELECT DISTINCT ?subject ?predicate ?object
5 WHERE {
6   ?subject ?predicate ?object .
7   FILTER (
8     STRSTARTS(STR(?predicate), "http://www.cidoc-crm.org/cidoc-crm/") ||
9     STRSTARTS(STR(?predicate), "http://www.ics.forth.gr/isl/CRMsci/") ||
10    STRSTARTS(STR(?object), "http://www.cidoc-crm.org/cidoc-crm/") ||
11    STRSTARTS(STR(?object), "http://www.ics.forth.gr/isl/CRMsci/")
12  )
13 }
14 ORDER BY ?subject
```

Press Alt+Enter to autocomplete

TableRaw responsePivot TableGoogle Chart

Filter query resultsCompact viewHide row numbersShowing results from 0 to 31 of 31. Query took 0.1s, moments ago.

	subject	predicate	object
1	http://localhost/megalod/3937/item/ah-001	crm:E57_Material	http://vocab.getty.edu/page/aat/300011443
2	http://localhost/megalod/3937/item/ah-002	crm:E57_Material	http://vocab.getty.edu/page/aat/300011443
3	http://localhost/megalod/3937/item/ah-003	crm:E57_Material	http://vocab.getty.edu/page/aat/300011175
4	http://localhost/megalod/3937/item/ah-005	crm:E57_Material	http://vocab.getty.edu/page/aat/300011173
5	http://localhost/megalod/3937/item/ah-006	crm:E57_Material	http://vocab.getty.edu/page/aat/300011173
6	http://localhost/megalod/3937/item/ah-010	crm:E57_Material	http://vocab.getty.edu/page/aat/300011173
7	http://localhost/megalod/3937/item/ah-014	crm:E57_Material	http://vocab.getty.edu/page/aat/300011173
8	http://localhost/megalod/3937/item/ah-015	crm:E57_Material	http://vocab.getty.edu/page/aat/300011173
9	http://localhost/megalod/3937/item/ah-017	crm:E57_Material	http://vocab.getty.edu/page/aat/300011175
10	http://localhost/megalod/3937/item/ah-018	crm:E57_Material	http://vocab.getty.edu/page/aat/300011171
11	http://localhost/megalod/3937/item/ah-020	crm:E57_Material	http://vocab.getty.edu/page/aat/300011171
12	http://localhost/megalod/3937/item/ah-022	crm:E57_Material	http://vocab.getty.edu/page/aat/300011171
13	http://localhost/megalod/3937/item/ah-023	crm:E57_Material	http://vocab.getty.edu/page/aat/300011171

We may use cookies to help us improve GraphDB and develop better features. No personal or sensitive information is collected. By clicking "OK," you consent to our [Cookie Policy](#).OK

DATA MANAGEMENT IN PRACTICE

Applying CIDOC CRM in an Academic Research Data Management System

mariana.c.malta@inesctec.pt

Credits to Domingos Santos

